

BioFit Colors can change everything.



www.biofit.com

800-597-0246



Dedicated to Design.
Committed to Quality.

Grade 5 - Cloth Upholsteries



Mingle Crypton®
61762 Natural



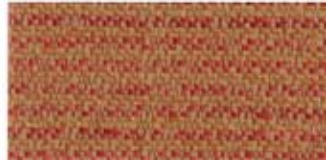
61763 Glade



61766 Surf



61760 Denim



61761 Bittersweet



61767 Eggplant

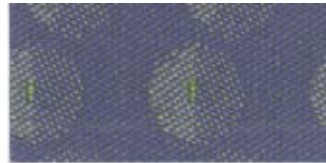


61765 Top Hat

Grade 4 - Cloth Upholsteries



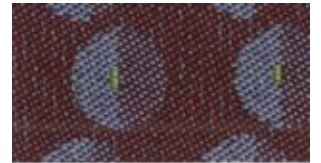
Modulation
6593 Pumice



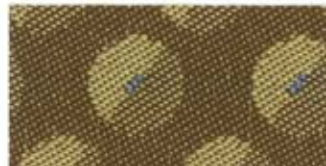
6592 Wave



6596 Cadet



6590 Shore



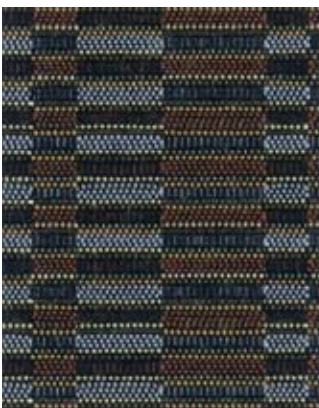
6598 Romaine



6599 Hollyberry



6597 Walnut



Vibe Crypton
61608 Twilight



61610 Caramel



61609 Olivine



61612 Indigo



61606 Gingersnap



61611 Pine



61607 Earth

Grade 3 - Vinyl Upholsteries



Tessuto
TES30 Truffle



TES19 Marble



TES11 Cannella



TES33 Adriatic



TES29 Murano



TES31 Majesty



TES34 Palazzo

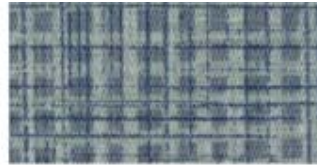
Grade 3 - Vinyl Upholsteries



Raffia
SCP270 Academy



SCP130 Flick



SCP 190 Premier



SCP170 Director



SCP310 Producer



SCP110 Oscar



SCP210 Silver Screen

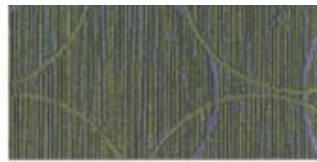
Grade 4 - Vinyl Upholsteries



Olympus
OLY10 Admiral



OLY04 Dune



OLY13 Laurel



OLY11 Pewter



OLY08 Shoya



OLY12 Manuka



OLY14 Beluga

Grade 2 - Vinyl Upholsteries



Shantung
SH06 Adriatic



SH12 Metal



SH13 Alligator



SH02 Platinum



SH08 Penny



SH11 Mulberry



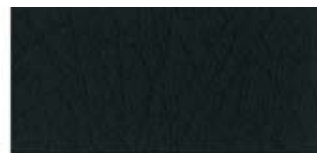
SH03 Graphite



Moccasin
MOC22 Classic



MOC36 Saddle



MOC23 Aspen



MOC19 Desert



MOC30 Rustic Red

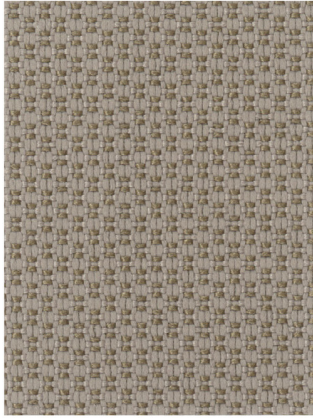


MOC33 Wine

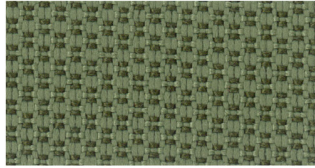


MOC32 Shale

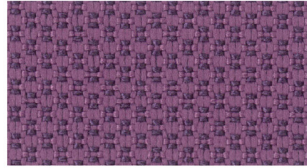
Grade 2 - Cloth Upholsteries



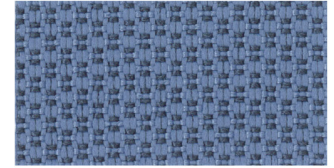
Bryant Park
6555 Pumice



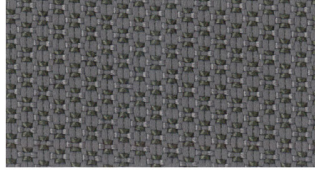
6559 Hemlock



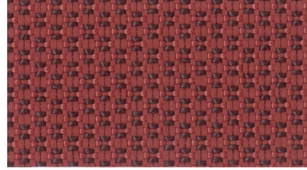
6562 Violet



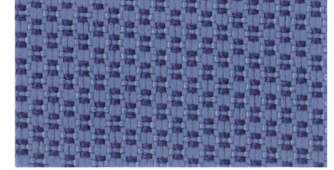
6558 Saxon Blue



6560 Gunmetal



6550 Burgundy



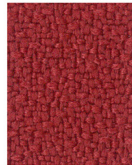
6563 Night Shadow



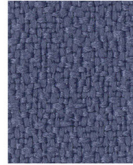
New Hempstead
NH395 Grey



NH361
Nickel



NH406
Fire



NH509
Galaxy



NH424
Cocoa



NH333
Black



NH420
Jodhpurs



NH389
Red Red Wine

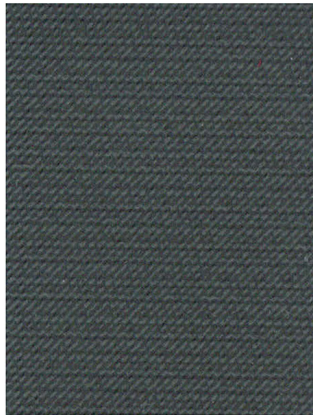


NH422
Napa



NH369
Navy

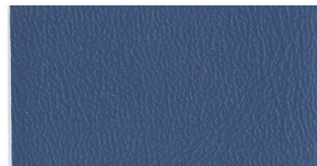
High Tech Cloth and Vinyl Upholsteries



Conductive Vinyl Gr. A
Black



Static Gr. C
Grounded Ebony



Microcon Gr. B
Blue



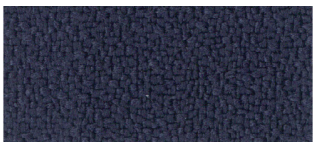
Static Gr. C
Grounded Navy



Microcon Gr. B
Black



ShipNow Cloth and Vinyl Upholsteries



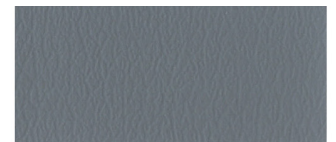
New Hempstead Gr. 2
NH369 Navy



New Hempstead Gr. 2
NH333 Black



Avant Gr. 2
AV106 Royal



Avant Gr. 2
AV139 Greystone



Static Gr. C
Grounded Navy



Static Gr. C
Grounded Ebony



Microcon Gr. B
Blue



Microcon Gr. B
Black



Avant Gr. 2
AV126 Black

Grade 4 - Breathable Nylon Upholsteries



Black Finesse



Grey Finesse

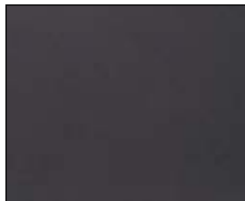


Indigo Finesse

Grade 3 - Vinyl Upholsteries



PH65 Pearl



PH64 Nearly Black



PH62 Claret



PH63 Navy

* Can meet CA 133 with suitable components

Colors for GG Series Chairs



Burgundy



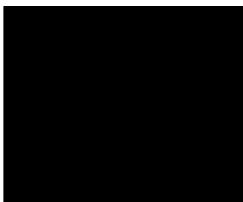
Navy Blue



Black

Please note: Actual colors of may differ from those shown.

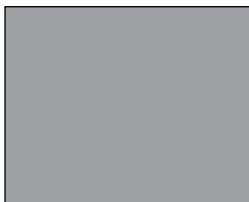
Standard Metal Part Finishes



06 Black



05 Silvervein



04 Gray



02 Almond

Please note: Actual colors of metal part finishes may differ from those shown.

Shell Colors for KX Series Chairs



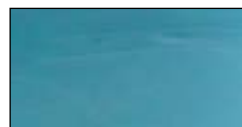
Newport Burgundy



Highland Green



Nordic Black



Mediterranean Blue





Caribbean Orange



Pacific Blue

Please note: Actual colors of upholsteries may differ from those shown here. Swatches are available upon request.

Specifications

Pattern	Content	Abrasion (Wyzenbeek)	Protective Finish	Cleaning Code
Avant	Contract Vinyl	250,000 double rubs	Enhanced Soil/Stain Protection	W-S
Bryant Park	100% Polyester	100,000 double rubs	Enhanced Soil/Stain Protection	W
Conductive Black Vinyl	Vinyl coated Fabric		Dirt/stain resistant	
Mingle Crypton®	 100% Post Consumer Recycled Polyester	50,000 double rubs	Crypton Green®	W
Moccasin	Contract Vinyl with Polyester Backing	100,000 double rubs	Soil/Stain Protection	W-S
Modulation	 93% Post Industrial Recycled Polyester 7% Post Consumer Recycled Polyester	100,000 double rubs	Greenshield™	W-S
New Hempstead	100% Polyester	600,000 double rubs	Enhanced Soil/Stain Protection	W-S
Nytek	Nytek Specially Engineered nylon fiber matrix	250,000 double rubs	Built-in stain resistant finish	W
Olympus	Contract Vinyl with Polyester Backing	100,000 double rubs	Zeron® Protective Finish	W-S
Phoenix	Contract Vinyl	250,000 double rubs	Enhanced Soil/Stain Protection	W-S
Raffia	Contract Vinyl with Polyester Backing	200,000 double rubs	Enhanced Soil/Stain Protection	W-S
Shantung	Contract Vinyl with Polyester Backing	100,000 double rubs	Enhanced Soil/Stain Protection	W-S
Microcon Vinyl	Stati-dissipative Vinyl	100,000 double rubs		W**
Static Dissipative Fabric	97.5% Nylon 2.5% Conductrol	100,000 double rubs		W
Tessuto	Contract Vinyl with Polyester Backing	100,000 double rubs	Enhanced Soil/Stain Protection	W-S
Vibe Crypton®	52% Polyester, 48% Rayon	50,000 double rubs	Crypton®	W

** Cleaning:

Clean with a solution of mild liquid soap and water, then wipe with a lint-free cloth. The use of any product containing silicone, alcohol, or solvents is not recommended, and it will adversely affect the ESD properties of the materials.

Flammability:

All patterns meet or exceed the flammability requirements of California Technical Bulletin 117, Section E. Some patterns have been tested for other flammability specifications. These patterns may contribute to compliance with California Technical Bulletin 133 when used in conjunction with other suitable components.

Cleaning Codes:

W: Water-based cleaning agents and foam may be used for cleaning. Cleaning by a professional furniture cleaning service is recommended.

W-S: Water-based cleaning agents and foam may be used for cleaning. This vinyl may also be cleaned with mild, water-free solvents. Cleaning by a professional furniture cleaning service is recommended.



Reduced Environmental Impact - this product is produced using 100% recycled fiber.

Memo Samples: Please contact BioFit at 800-597-0246 or biofit@biofit.com



Dedicated to Design.
Committed to Quality.

cf stinson

cf stinson
2849 Product Drive
Rochester Hill, MI 48309
USA

BioFit Engineered Products
P.O. Box 109
Waterville, OH 43566-0109
USA